

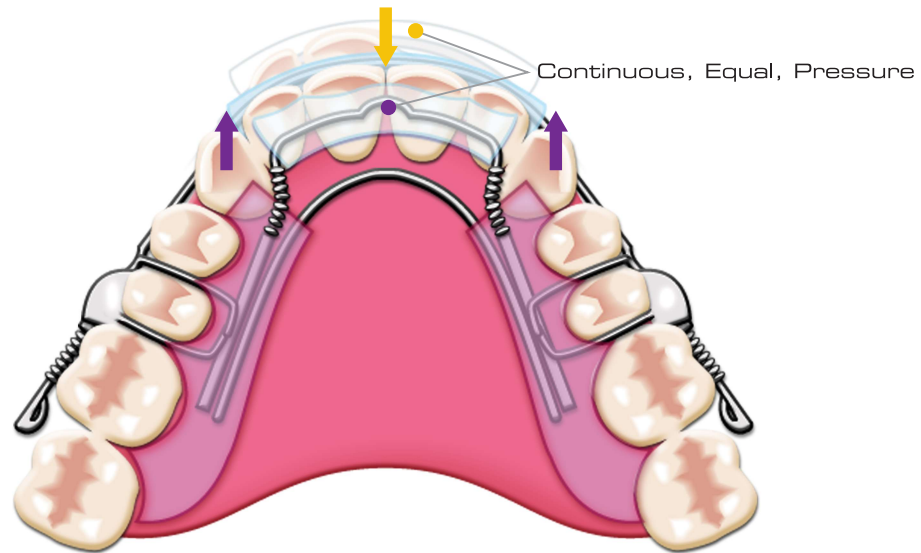
iNMAN
aligner



*Easy,
Convenient
and Non-Obtrusive*

The Inman Aligner achieves controlled and continuous movement of teeth. Precision alignment is accomplished with just one appliance.

Precision Alignment Innovative

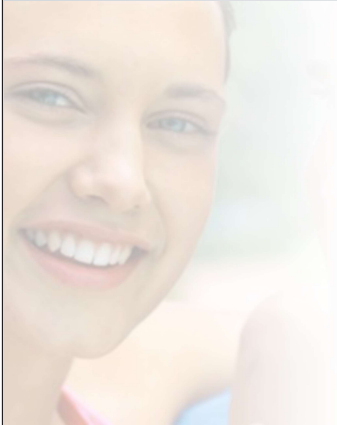


How it works

The Inman Aligner utilizes Niti coil spring to create steady, gentle forces. It features a lingual component that creates a piston like action and labial components that reverse the same action.

These components work together to create the best spring aligner ever designed. The Inman Aligner is completely controllable and easily adjusted. The clinician has the option of adding more Niti if necessary to this strong, comfortable appliance.

I n n o v a t i v e • F u n c t i o n a l • E f f e c t i v e



With the Inman Aligner,
 great results are achieved
 with less chair time and
 minimum inconvenience
 to your patients.

Results Achieved Effective

"The Inman Aligner has allowed patients who do not want braces to correct a variety of problems with a minimum of inconvenience and expense.

It is a tremendous choice to offer as an alternative to my patients."

DR. PETER WOHLGEMUTH
 BOCA RATON, FLORIDA

"Simply, if you have not tried the Inman Aligner, you have missed the boat!"

DR. ROY KING
 JUPITER, FLORIDA



Before treatment **After treatment**
 Patient results • 6 weeks treatment time



Before treatment **After treatment**
 Patient results • 6 weeks treatment time

I n n o v a t i v e • F u n c t i o n a l • E f f e c t i v e

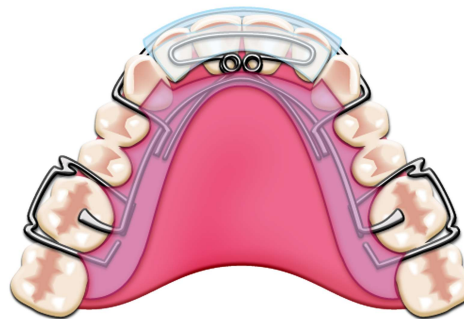


Mini Spring Retainer

Appropriate for very slight rotations and minimal tipping.

Abrupt uncomfortable force from Stainless Steel.

Retention can be a problem with this design.



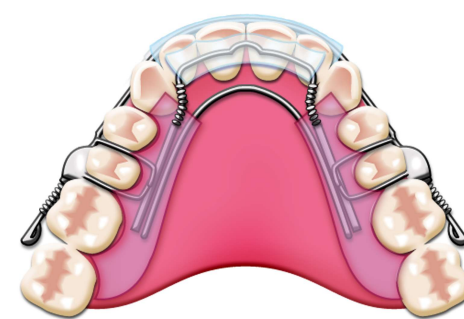
Super Spring Retainer

Appropriate for minor crowding and rotations.

Abrupt uncomfortable force from Stainless Steel.

Can tip teeth into a better position.

Multiple appliances may be used for moderate correction.



Inman Aligner

Appropriate for moderate correction of crowding and rotations.

Gentle steady forces created by Nickel Titanium coil spring.

Bodily moves teeth into ideal position.

Good for correction of Adult Relapse.

No retention problems.

iNMAN
aligner

Multi-Functional Designs

Versatility

The Inman Aligner is designed to solve problems associated with current spring retainers. This appliance can be used for a wide variety of applications and the components can be utilized in current designs to enhance their functions.



Inman Aligner Standard *(upper or lower)*

Lingual and labial coil components to correct anterior rotations and crowding.



Inman Aligner Fixed Bow *(upper or lower)*

Lingual coil component and the new fixed labial bow can be used when more lingual force is indicated.



Inman Cross Bite

Lingual coil component with posterior bite pads to open bite and allow anteriors to jump.



Inman Habit Fixed

Labial coil component used with a habit crib or roller to close anterior spacing as habits are broken.



Inman Fixed *(upper or lower)*

Lingual and labial coil components in a banded version for noncompliant patients needing anterior correction.

I n n o v a t i v e

•

F u n c t i o n a l

•

E f f e c t i v e